

Performance Series IP Mounts

www.honeywellvideo.com

INDOOR/OUTDOOR MOUNTS AND ACCESSORIES

Honeywell's Performance Series IP mounts and accessories provide a range of installation options for the Honeywell Performance Series IP cameras, including junction box, wall, pole, and corner mounts.

The mounts provide easy cable routing with no exposed wiring, and the cameras can be installed, adjusted, and tested without repositioning the housing. All of the mounts and accessories are suitable for indoor or outdoor use.

The junction boxes, and pole mount are constructed of die-cast aluminum. The corner mount adapter is made of SECC steel. The HEJB junction box is made of die-cast aluminum and SECC steel. All of the mounts and accessories are powder coated to match the finish of the camera.

Market Opportunities

Honeywell's Performance Series IP mounts and accessories provide excellent value at an attractive price, featuring simple, clean lines, rugged construction, and a wide range of mounting options.

Features

Description	Junction Box				Wall Mount	Pole Mount	Corner Mount
	HQA-BB1	HQA-BB2	HBS2-BB	HEJB	HQA-WK	HQA-PM	HB34S2-CM
Low profile, contemporary design	✓	✓	✓	✓	✓	✓	✓
Economically priced	✓	✓	✓	✓	✓	✓	✓
Easy cable feed-through	✓	✓	✓	✓	✓	✓	✓
Die-cast aluminum	✓	✓	✓	✓	✓	✓	
SECC steel				✓			✓
Off-white powder finish	✓	✓	✓	✓	✓	✓	✓
Indoor/Outdoor	✓	✓	✓	✓	✓	✓	✓



HQA-BB1 Junction Box



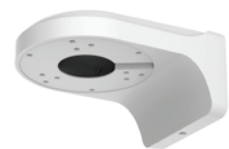
HQA-BB2 Junction Box



HBS2-BB Junction Box



HEJB Junction Box



HQA-WK Wall Mount



HQA-PM Pole Mount



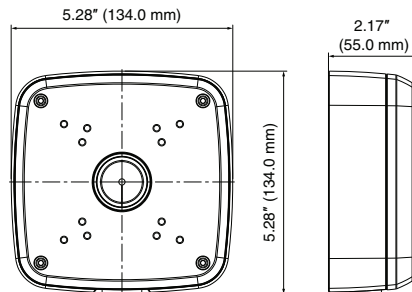
HB34S2-CM Corner Mount

Performance Series IP Mounts

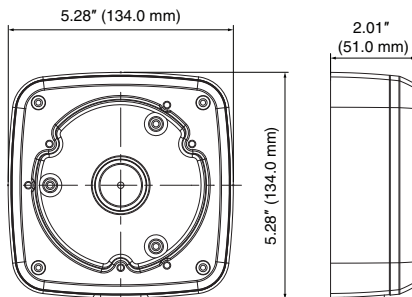
www.honeywellvideo.com

DIMENSIONS

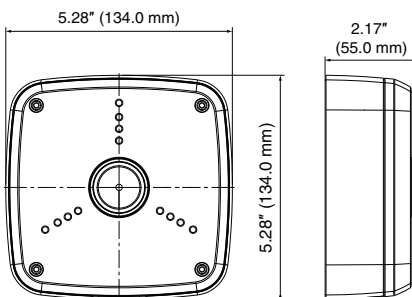
HQA-BB1



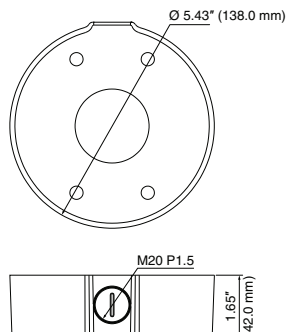
HQA-BB2



HBS2-BB



HEJB

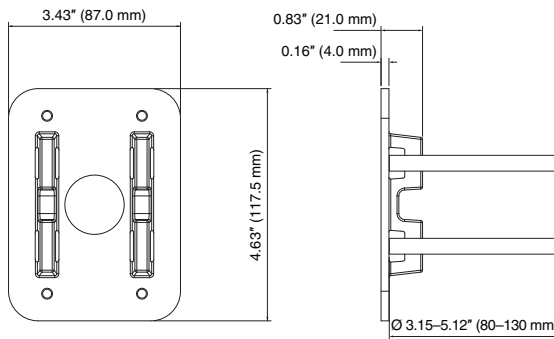


Performance Series IP Mounts

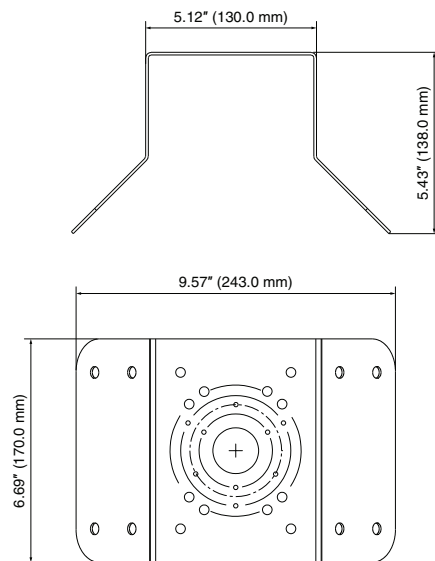
www.honeywellvideo.com

DIMENSIONS

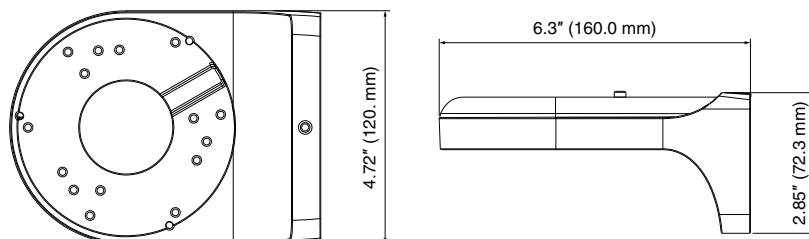
HQA-PM



HB34S2-CM



HQA-WK



Performance Series IP Mounts

www.honeywellvideo.com

SPECIFICATIONS

Mechanical			
Model No.	Unit Weight	Construction	Dimensions
HQA-BB1	1.1 lb (0.5 kg)	Die-cast aluminum	5.28 × 5.28 × 2.17 in. (134.0 × 134.0 × 55.0 mm)
HQA-BB2	1.32 lb (0.6 kg)	Die-cast aluminum	5.28 × 5.28 × 2.01 in. (134.0 × 134.0 × 51.0 mm)
HBS2-BB	1.1 lb (0.5 kg)	Die-cast aluminum	5.28 × 5.28 × 2.17 in. (134.0 × 134.0 × 55.0 mm)
HEJB	0.84 lb (0.38 kg)	Die-cast aluminum and SECC steel	ø 5.43 × 1.65 in. ø (138.0 × 42.0 mm)
HQA-PM	0.44 lb (0.2 kg)	Die-cast aluminum	4.63 × 3.43 × 0.83 in. (117.5 × 87.0 × 21.0 mm)
HB34S2-CM	3.75 lb (1.7 kg)	SECC steel	9.57 × 6.69 × 5.43 in. (243.0 × 170.0 × 138.0 mm)
HQA-WK	2.2 lb (1.0 kg)	Die-cast aluminum and ABS	4.72 × 2.85 × 6.3 in. (120.0 × 72.3 × 160.0 mm)

Mounts	Compatible Honeywell Cameras
HQA-BB1	HBD2PR1(X)
HQA-BB2	H4D3PRV2 H4D2PRV3
HBS2-BB	H2D2PR1(X) HED1PR3 HED3PR3 HBD1PR1 HBD3PR1 HBD3PR2
HEJB	H2D2PR1(X) HED1PR3 HED3PR3 HBD1PR1 HBD3PR1
HQA-PM	H2D2PR1(X)* HBD2PR1(X)*
HB34S2-CM	H2D2PR1(X)* HBD2PR1(X)*
HQA-WK	HED1PR3 HED3PR3 H4D3PRV2 H4D3PRV3

* With a compatible junction box

A compatible junction box is required when installing to either the HQA-PM pole mount or the HB34S2-CM corner mount.

ORDERING

Ordering	
HQA-BB1	Junction Box, Off-White
HQA-BB2	Junction Box, Off-White
HBS2-BB	Junction Box, Off-White
HEJB	Junction Box, Off-White
HQA-PM	Pole Mount Adapter, Off-White
HB34S2-CM	Corner Mount Adapter, Off-White
HQA-WK	Wall Mount, Off-white

NOTE: Honeywell reserves the right, without notification, to make changes in product design or specifications.

For more information:

www.honeywell.com/security

Automation and Control Solutions

Honeywell Security and Fire
2700 Blankenbaker Pkwy, Suite 150
Louisville, KY 40299
1.800.323.4576
www.honeywell.com

L/D2PR1XD/D
December 2015
© 2015 Honeywell International Inc.

Honeywell